

## Nintendo Power Supply Conversion Kit #2

Copyright 2003-2017 [Arcadeshop, LLC](http://Arcadeshop.com) - all rights reserved.



Although this upgrade has been tested and the techniques used will not directly cause harm to your game. If you do something wrong, you can very seriously damage the electronics! So...

**WARNING**



...Please read the instructions.

### **To perform this upgrade you should:**

- Have a working understanding of electronics.
- Be familiar with safe handling procedures for electronic components.
- Be able to follow directions.

Anytime you start messing around with something (particularly something electronic) you accept a certain amount of risk that you may break something. This kit carries with it no guaranty of compatibility to your particular game. If you carefully follow these instructions, you'll do fine and everything will work. If this looks like it's above your confidence level please recruit someone to install the kit for you!

### **Introduction**

Congratulations! You now have the power supply conversion kit which should bullet proof your game. The original power supply could be rebuilt, but a new switching power supply is power efficient, has built in shut down protection and runs cooler.

Before we get started, grab your favorite beverage, maybe something to snack on, and find a quiet place to read this manual so you fully understand what to do before you start tinkering around with your precious labor of love!

### **Necessary Parts and Tools:**

You will need the following parts/tools for this upgrade...

- Phillips Screwdriver
- Pliers

### **Step One: Unplug the game from its power source!**



While installing this kit, electric shock is possible if power is present!

## Step Two: Disconnect old power supply

The original power supply is mounted at the bottom of the cabinet, Unplug the connectors at the top of the power supply. Note: There could be either two or three connectors used.

## Step Three: Assembly and mounting new power supply

In this step you will need to attach the adapter and A.C. power wires to the new switching power supply. (See page 1) Next, simply mount the new power supply in a convenient location. Next, move and connect each power supply cable to the new power supply adapter in the proper location and orientation.

Note: This kit is compatible with Popeye and the PP-900A power supply.

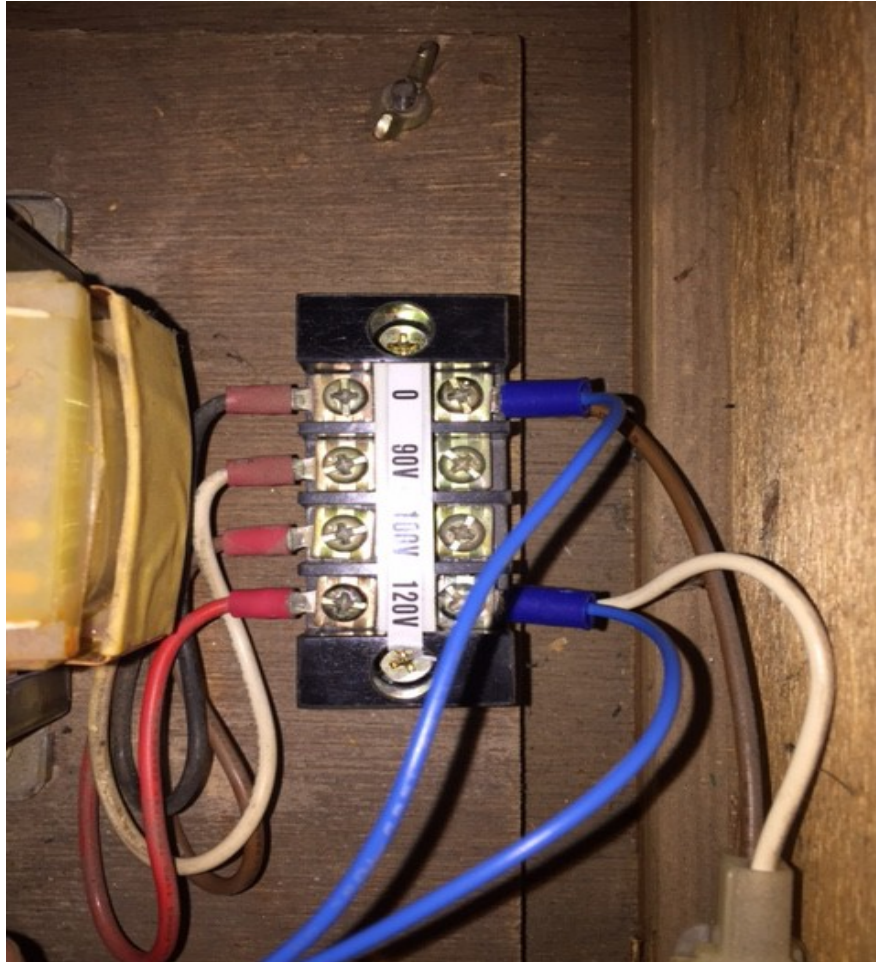
Popeye configuration:

Popeye uses the two connectors **9P** & **10P** on power supply #: PP-900A.



It is possible to plug your cables in backwards which will cause damage to your game boards, Ensure the tab on the connector matches the diagram on the new power supply interface adapter.

Piggy-back the two A.C. power wires provided to the A.C. input wires on the terminal strip as shown below. One wire goes to "0" and the other to "120V".



#### **Step Four: Check your work**

Verify all connectors and be sure everything is secure. You may need to adjust the +5 volts to 5.05 volts. For additional help visit our web site: [www.arcadeshop.com](http://www.arcadeshop.com)

You have installed the kit – congratulations!

#### **Final Notes:**

This kit carries with it no guaranty of compatibility to your particular game. Although this kit has been tested with numerous games, there is a possibility that some of them are different. This kit carries no liability protection for you game, while there is no reason this kit should cause damage to your game, it is possible that incorrect or poor wiring can damage your game board(s). Liability is limited to repair/replacement of the Kit only.